

MEREDITH BUILDING
circa 1865

Date Designated: July 25, 1983 to By-Law No. 40/83, SCHEDULE B-2

Lot Description: PT TOWN PLOT LOT 52 & 54

— ARCHITECTURAL DESCRIPTION —

This brick commercial block has commercial or storage space above. It is two storeys high in a single unit and originally had a very simple facade, with small windows above the store front and a simply moulded brick parapet hiding a low pitched shed roof. Today, it has become one of the most elaborate facades in the town. It was most likely a three bay main facade on the second floor, but only one window remains and it has been blocked over and marred with an air conditioner. The window is headed with a flat arch and topping the second storey is a simple brick cornice. Originally, this building was in two units facing Walton Street; the west unit, now where the windowed area of the restaurant front is located, and the east unit, now located behind the stone wall, having only a ten foot frontage and being known originally as the "Wedge".

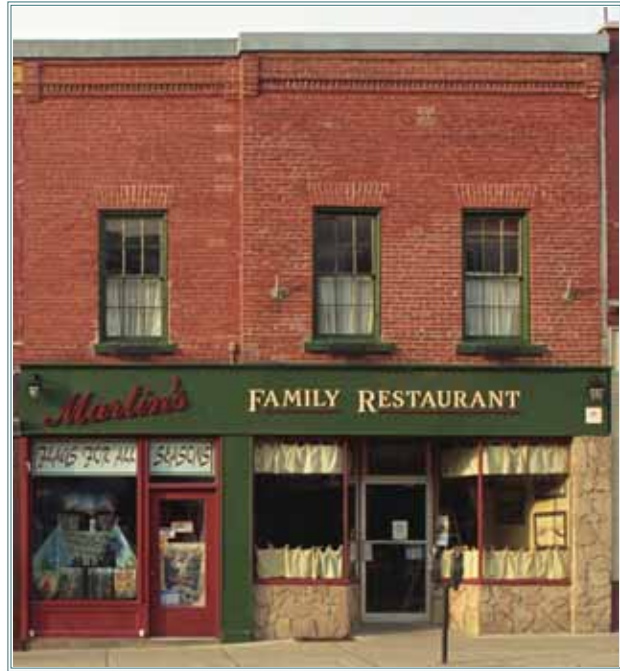
— HISTORICAL ABSTRACT —

Henry Howard Meredith acquired the land in 1849 and during the course of his ownership, he erected this building circa 1865. As mentioned in the description above, the building is comprised of two units. The east unit or "the Wedge" has only a ten-foot frontage. In 1907, John A. Brown purchased the properties that comprised the Meredith Estate. In 1930, he sold this building to William P. Tickell, confectioner who had run his business from this location for many years prior to the purchase.

Undaunted by its diminutive size, various enterprises have established businesses in the wedge including a watchmaker in the 1880's (J.G. Tate), a tailor in the 1900's (J.P. Flood) and an insurance agent (E.V. Dyer). Before

ARCHITECTURAL DETAIL

George and John Mitchell moved to **65 Walton Street** in 1872, they occupied the western unit of **63 Walton Street** as a drug store. In 1889, Patsey Connell ran an oyster bar in the building. In 1907, when the Meredith Estate was sold, Fred Oke ran a restaurant and confectionery store in the western unit.



*This was originally a very simple facade with small windows above the storefront with a simple moulded brick parapet resembling the neighbouring building to the east (**59 Walton Street**) hiding a low pitched shed roof. The facade underwent a dramatic alteration which included a stone finish still visible on the western unit.*