

41-51 WALTON STREET

Walton Street Heritage District



ROBERTSON BLOCK
circa 1850

41-43 Walton Street

Date Designated: October 6, 1997 to By-Law No. 44/97

Lot Description: PLAN 33 LOT 4

45 Walton Street

Date Designated: January 10, 1994 to By-law No. 01/94, SCHEDULE B-1

Lot Description: PLAN 33 PT LOT 3 LOT 4

49-51 Walton Street

Date Designated: October 6, 1997 to By-Law No. 44/97

Lot Description: PLAN 33 LOT 1 TO 2

ARCHITECTURAL DESCRIPTION

This is a brick commercial block with residential and/or storage space above. It is three storeys high, originally in two or three parts, the east half in two units and the west half in a single unit, but possibly two originally. The brick is a Flemish bond design, the east half painted and the west half its natural colour. It is similar in style to **37 Walton Street**, the Long-Robertson Building, but only three storeys high. The low-gabled parapet roof, parallel to Walton Street, meets a brick cornice with projecting dentils, but with simpler ornamentation than the Long-Robertson building.

The cornice heads twinned pilasters, except between **41-45 Walton Street** where only a single pilaster exists, and between **45, 49-51 Walton Street** where a triple pilaster exists. The pilasters are crowned with moulded wood cappings except for over **45 Walton Street**. There are eleven bays to the main facade, six over the east half and five over the west half.

circa 1850

The transom over sash style windows appear as casement windows, but function as double hung and are headed by flat brick arches. The storefronts are all modern; **45 Walton Street** being most suitable for the streetscape in an earlier twentieth century design. The upper floors are occupied with apartments. The front and rear of the building is in fair to good condition.

 HISTORICAL ABSTRACT

As in **35 and 37 Walton Street**, Peter Robertson acquired the property from his father, James, in 1849. The Robertson Block was originally part of the neighbouring block to the east and formed an impressive corner to Walton and Queen Streets (**35 Walton, 37 Walton, and 41-51 Walton Street**). The estate of Peter James Robertson was divided in 1906, and this block (**41-51 Walton Street**) was divided and sold in four lots. Running west to east, lots 1 and 2: 49-51; lot 3: 45 and lot 4: 41. In 1906, lots 1 and 4 were sold to Minnie L. Brown, the Robertson estate kept lot 2, and lot 3 was sold to Ella M. Montizambert.

In the 1860's, Benjamin R. Heaslip ran a dry goods store in **41 Walton**, J. Craick ran a dry goods store in **45 Walton**, and Norman Strong ran a bookstore in **49 Walton Street**. A hardware store, whose location was referred to as being "at the sign of the Golden Anvil", occupied **51 Walton** for many years. From 1850 to 1856, it was owned by T.W. Metcalfe (**134-136 Walton Street, Metcalfe Terrace**). From 1856 to 1878, it was run by Mulligan and Brown, and from 1878 to 1901 it was run by Mulholland and Brown. William Williamson's bookstore occupied lot 2 around 1878, with Craick in lot 3.

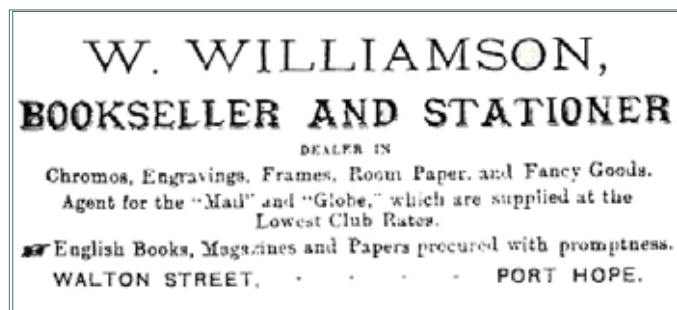
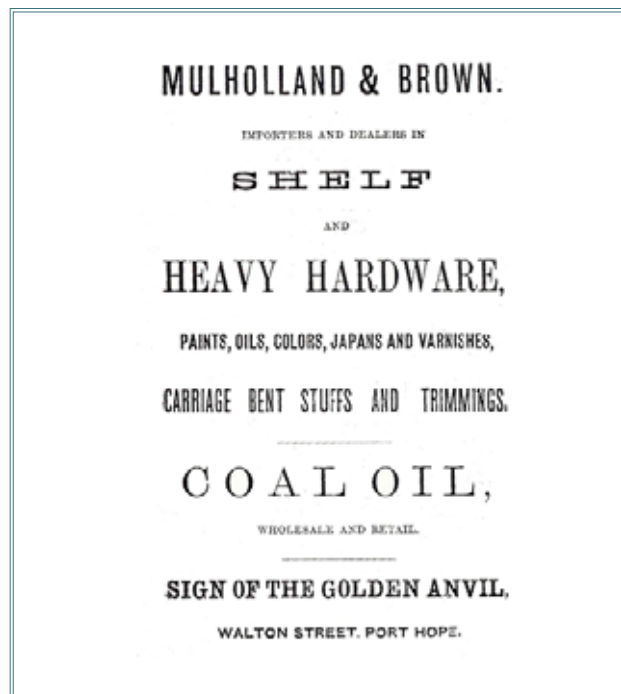
In the latter part of the 1800's, a photograph from the Clayton Collection shows B.R. Heaslip in **41 Walton**, J. Craick and Company in **45 Walton**, W. Williamson in **49 Walton**, and Mulholland and Brown in **51 Walton**. Sometime during J.F. Clarke's occupation of the Long-Robertson Building (**37 Walton Street**), J. Mitchell occupied 41 Walton.

Walton Street Heritage District

 HISTORICAL NEWSPAPER AD



The Golden Anvil was owned by John Mulligan in this ad from 1865, then by Mulligan and Brown, then in 1878, by Mulholland and Brown.



William Williamson also published a series of books at the turn of the century called Picturesque Port Hope with various views of the town.



In the latter part of the 1800's, a photograph from the Clayton Collection shows B.R. Heaslip in 41 Walton, J. Craick & Co. in 45 Walton, W. Williamson in 49 Walton, and Mulholland and Brown in 51 Walton.

New Hardware Store!

Sign of the Golden Anvil!

BY T. W. METCALFE.

THE Subscriber begs to inform the inhabitants of PORT HOPE that he has removed his Store to the west end of the new Brick Building lately erected by Peter Robertson, and is now receiving a Large and well selected Stock of

HARDWARE!

From Birmingham, Sheffield and Wolverhampton, which he will sell by

RETAIL AT WHOLESALE PRICES,

As he is determined to Sell for Cash Only.

His Stock comprises Scotch, Swedes, Horseshoe and Banks' Iron, Hoop, Band and Nailrod do., Cast, Blister and Gorman Steel, Cut, Wrought and Horseshoe Nails, I. C. and I. X., Tin, Canada Plates, Blasting FF. and Canister Powder, Shot, &c. An excellent assortment of

BEST SHEFFIELD CUTLERY,

Consisting of Knives and Forks, Pen and Pocket Knives, Razors, Scissors, &c. &c.

CARPENTERS' TOOLS OF EVERY DESCRIPTION.

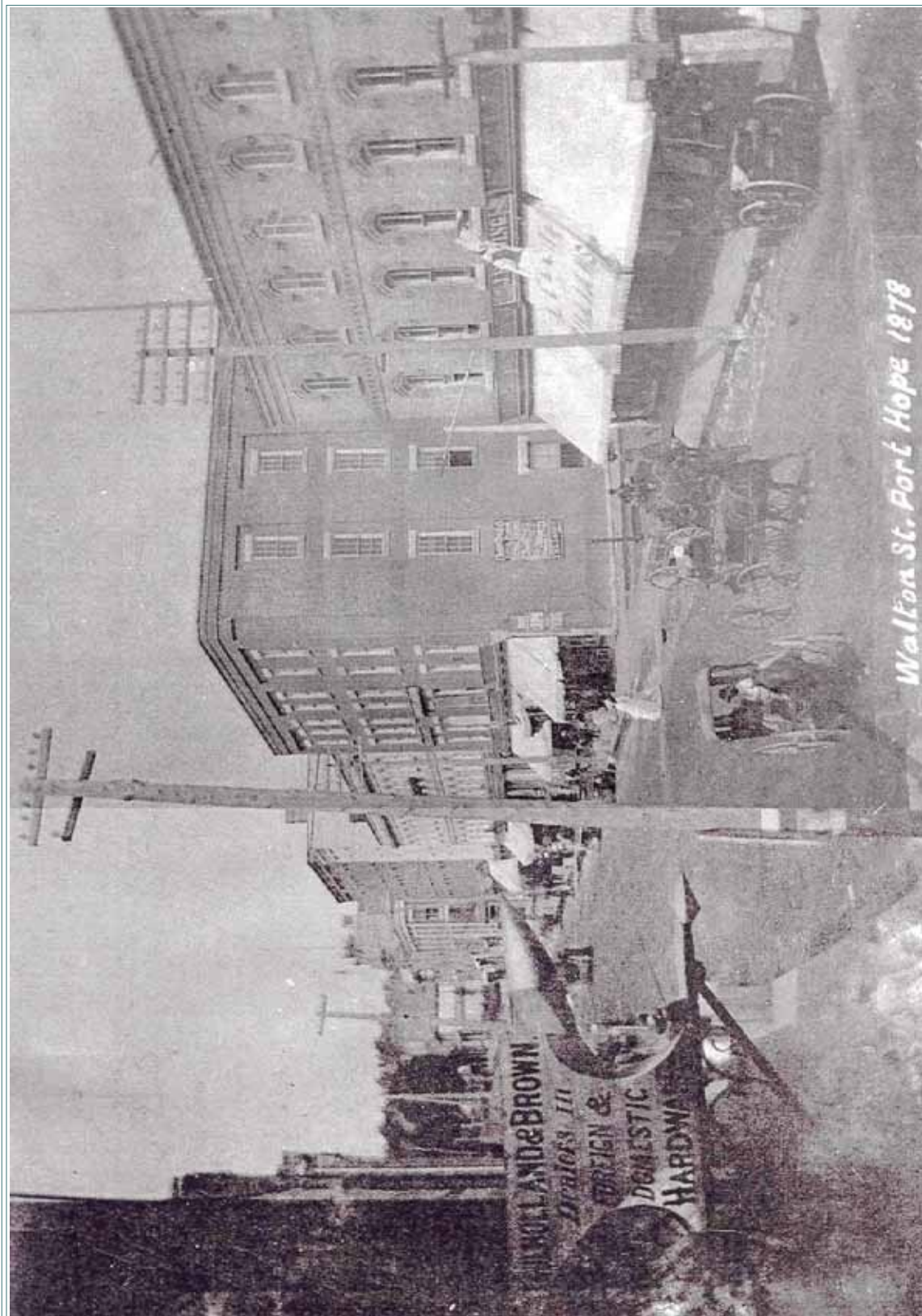
Best Philadelphia Mill Saws, Cross Cut and Wood Saws, American Augers, Planes, Chisels, Adzes and Axes, Rasps and Files (all sizes), Hinges, Locks, Latches, &c.

Brass and Britannia Metal Wares of every description and in great variety. Paints and Oils of the best quality, Window Glass, Putty, &c., &c., &c.

Port Hope, January 8, 1850

T. W. METCALFE.

The original "Sign of the Golden Anvil" established by T.W. Metcalfe (Metcalfe Terrace 134-136 Walton Street) in 1850 when the block was first built.



A view of Walton Street with the Golden Anvil during the ownership of Mulholland and Brown (1878) as seen from a window in the Robertson Block. The building at the corner of Ontario and Walton Street on the north west corner is the Wilson Block later demolished and replaced with a bank building.