



JAMES SCULTHORPE TOWNHOUSE
circa 1855-60

Date Designated: April 2, 1991 to By-Law No. 30/91, SCHEDULE B-5

Lot Description: BALDWIN PLAN PT LOT 9

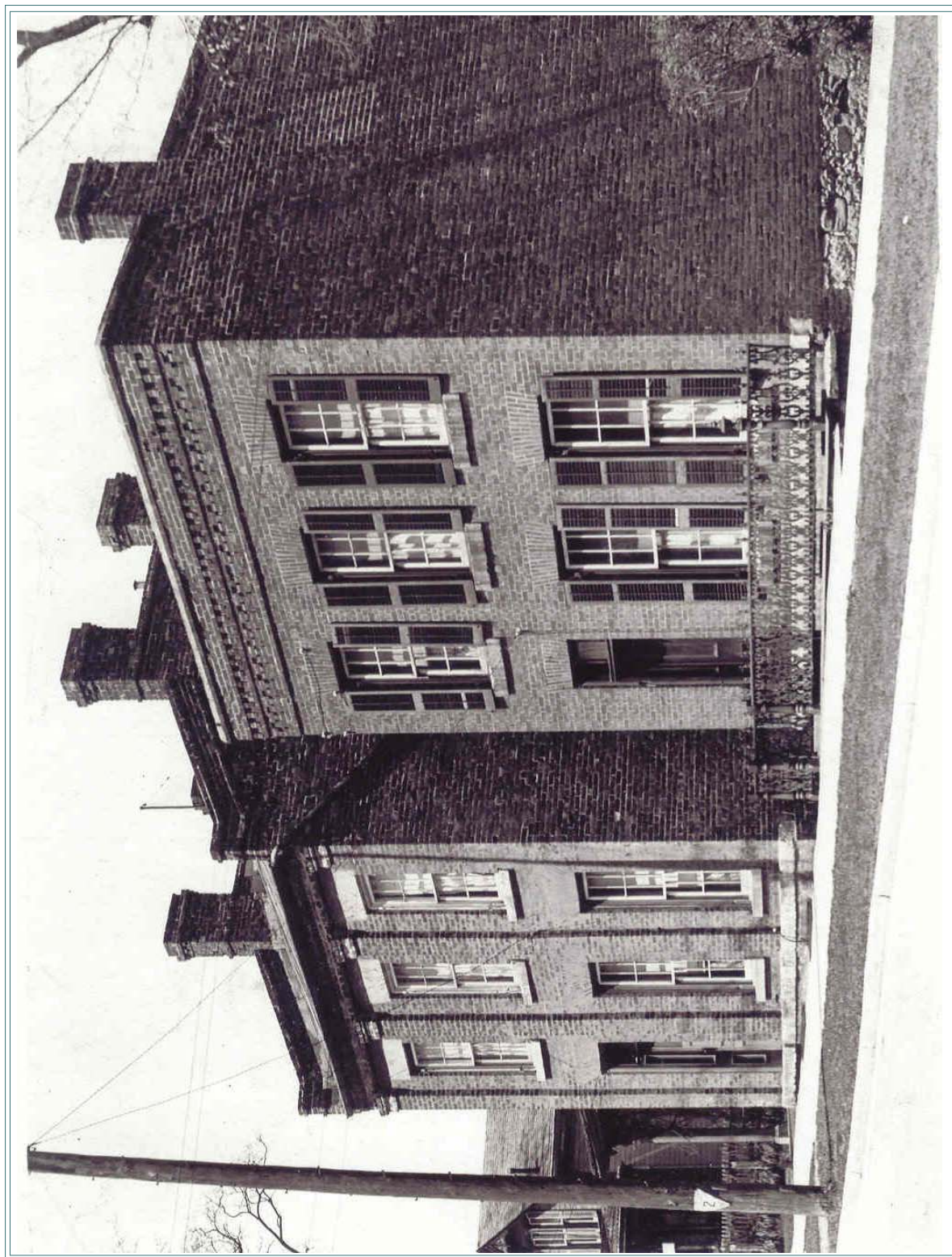
— ARCHITECTURAL DESCRIPTION —

This house is a variation on the urban "town house" theme seen frequently on local houses of the 1840-60 period. It adopts the typical upright appearance, with side hall plan, though this house has a flat shed roof unlike the gable parapet more typical of the genre. The house stands 2 storeys high at front; the lot slopes to the rear, allowing the basement to open at ground level at the back. The medium is brick, with a Flemish bond facade. Patterned brick cornice is also of note. The facade has three bays; the sides are blind, again typical of the "urban" style. Windows are slender, especially on the main floor all are glazed with original six-over-six sash. Front door is placed to the left; above is a small rectangular transom. Of equal significance is the cast-iron fence, with its

lyre shaped pattern that cordons off the tiny front yard. It is a rare extant example of the founder's art. A dignified house of superior design, this building exemplifies an "urban" approach to domestic architecture. It stands in well-preserved condition, prominent along the upper Walton Street Streetscape.

— HISTORICAL ABSTRACT —

This town house was built for James Sculthorpe, grandson of Elias Smith, one of Port Hope's founders. James Sculthorpe (1792-1872) was one of the original settlers in Port Hope and came here from New York in 1793. He arrived with his widowed mother, Catherine Sculthorpe when he was just a baby. He volunteered for the militia in 1812, was stationed in Kingston for six months, and returned a sergeant. James Sculthorpe lived his entire life in Port Hope and was able to see the town grow from a population of about twenty-five in 1792 to five thousand at his death in 1872. He built a two-storey building on Queen Street, the Sculthorpe Block (*113 Walton Street*), and this townhouse. The house stayed in the Sculthorpe family for one hundred and thirteen years.



ARCHIVAL PHOTO OF SCULTHORP AND MCDUGALL TOWNHOUSES, WALTON ST.
ERIC ARTHUR FONDS, CIRCA 1932, ARCHIVES OF ONTARIO