



SCULTHORPE BUILDING (TD CANADA TRUST REPLACEMENT)
circa 1857 (replacement circa 1965)

Date Designated: October 6, 1997 to By-Law No. 44/97

Lot Description: TOWN LOT 56

— ARCHITECTURAL DESCRIPTION —

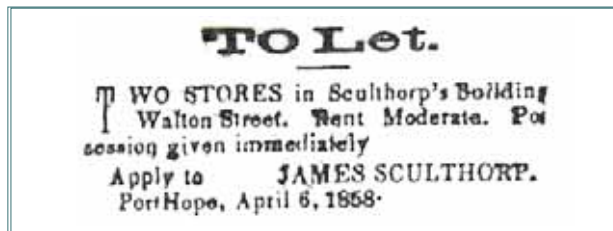
This building is a modern replacement to an 1857 brick commercial building, the Sculthorpe Block, which was three storeys high in two units separated in height by the slope of the street.

— HISTORICAL ABSTRACT —

When the Canada Trust Bank wanted to expand their location, a scheme was drawn up to incorporate the original handsome brick Sculthorpe Block, which had cast ironwork to the window heads and columns to the shop fronts. Regrettably, the proposal was not accepted and a one-storey modern block was constructed in place of the original block. The cast iron columns on street level, however, were salvaged from the Sculthorpe Block and incorporated into the restored shop front of the Long Robertson Building (*37 Walton Street*).

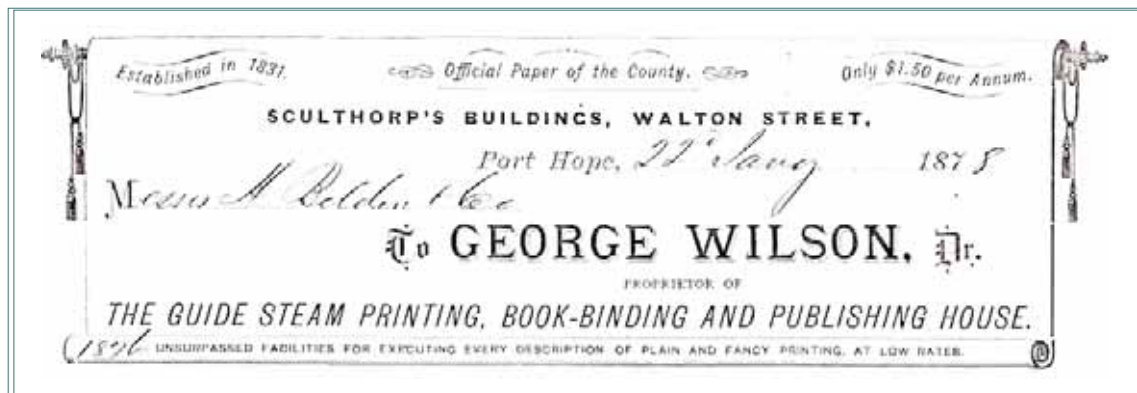
James (1792-1872) Sculthorpe (spelled without the "e" in historical ads), grandson of Elias Smith, one of Port Hope's founders and one of the original settlers in Port Hope who came here from New York in 1793, is credited with construction of this commercial block. An early "To Let" notice for the two units in the building that appeared in the local paper in April 1858 confirms the building had been constructed by this date. In addition to this block, James Sculthorpe built a two-storey building on Queen Street, and his residence, the Sculthorpe Townhouse (200 Walton Street).

HISTORICAL NEWSPAPER AD

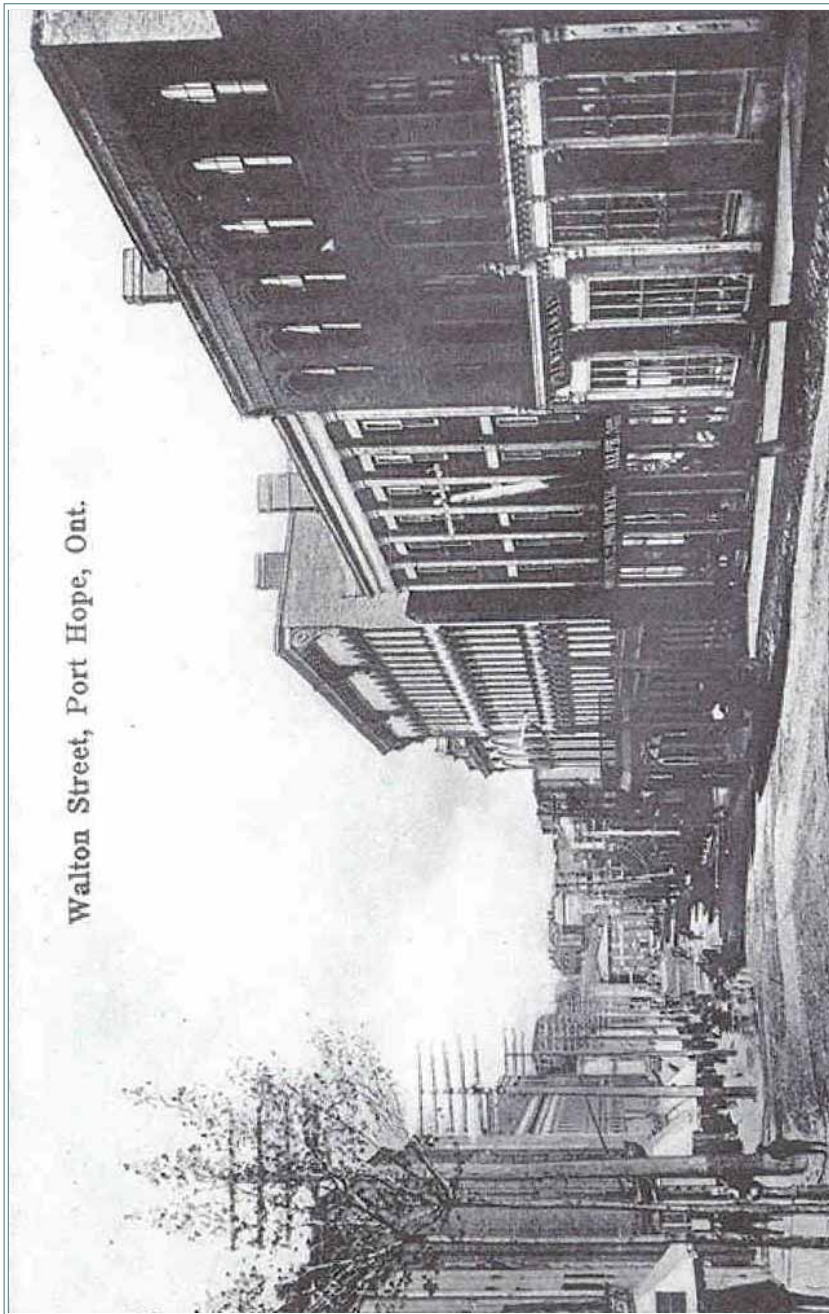


An ad that appeared in the local paper from April 1858 advertising two stores for rent in the Sculthorpe Block.

HISTORICAL BILLHEAD



A billhead dating from 1878, for George Wilson, publisher of the Port Hope Evening Guide and printer, indicates that the Guide Office was located in the Sculthorpe Block in 1878. Of particular interest, the billhead is made out to Belden & Company, the publishers of the Belden Atlas of 1878.



View of Walton Street with the handsome Sculthorpe Block on the right forming a unified block next to the Porter Block and St. Lawrence Hotel. This image was published by W. Williamson as a postcard in 1910. W. Williamson was a bookseller who had a store located in the Robertson Block (41-51 Walton Street). He also published a series of small books with views of Port Hope at the turn of the century called Picturesque Port Hope.